

DOKUMEN NEGARA  
SANGAT RAHASIA

**B74**

BAHASA INGGRIS SMA/MA IPA

Nama :

No Peserta :

# UJIAN NASIONAL

## TAHUN PELAJARAN 2011/2012

**SMA/MA**  
**PROGRAM STUDI**  
**IPA**

**BAHASA INGGRIS**

Selasa, 17 April 2012 (08.00 – 10.00)



PUSPEDIK  
BALBANG

**BSNP**  
Badan Standar Nasional Pendidikan

REKORSAHIBAH  
PUSPEDIK DAN KE

Mata Pelajaran : Bahasa Inggris  
Jenjang : SMA/MA  
Program Studi : IPA

Hari/Tanggal : Selasa, 17 April 2012  
Jam : 08.00 – 10.00

1. Isilah Lembar Jawaban Ujian Nasional (LJUN) Anda sebagai berikut:
  - a. Nama Peserta pada kotak yang disediakan, lalu hitamkan bulatan di bawahnya sesuai dengan huruf di atasnya.
  - b. Nomor Peserta, Tanggal Lahir, dan Paket Soal (lihat kanan atas sampul naskah) pada kolom yang disediakan, lalu hitamkan bulatan di bawahnya sesuai dengan angka/huruf di atasnya.
  - c. Hitamkan bulatan pada kolom Nama Mata Ujian yang sedang diujikan.
  - d. Nama Sekolah, Tanggal Ujian, dan Bubuhkan Tanda Tangan Anda pada kotak yang disediakan.
2. Tersedia waktu 120 menit untuk mengerjakan Paket Soal tersebut.
3. Jumlah soal sebanyak 50 butir, pada setiap butir soal terdapat 4 (empat) atau 5 (lima) pilihan jawaban.
4. Periksa dan laporkan kepada pengawas ujian apabila terdapat lembar soal yang kurang jelas, rusak, atau tidak lengkap.
5. Tidak diizinkan menggunakan kalkulator, HP, tabel matematika atau alat bantu hitung lainnya.
6. Periksalah pekerjaan Anda sebelum diserahkan kepada pengawas ujian.
7. Lembar soal boleh dicoret-coret.

**SELAMAT MENGERJAKAN**

**Listening Section**

In this section of the test, you will have the chance to show how well you understand spoken English. There are four parts to this section with special directions for each part.

**PART I****Questions 1 to 4.****Directions:**

In this part of the test, you will hear some dialogues and questions spoken in English. The questions and the dialogues will be spoken twice. They will not be printed in your test book, so you must listen carefully to understand what the speakers are saying.

After you listen to the dialogue and the question about it, read the five possible answers, and decide which one would be the best answer to the question you have heard. Now listen to a sample question.

You will hear:

Man : We are almost out of cereal.

Woman : I know. I will go to the grocery store to buy some more. I will also get some milk, bread and fruit.

Man : Would you get me some instant noodles?

Woman : Sure.

Narrator : What does the man want the woman to buy?

- A. Fruit.
- B. Milk.
- C. Bread.
- D. Noodles.
- E. Cereal.

Sample answer



The best answer to this question is "Noodles". Therefore you should choose answer (D)

1.
  - A. Shopping at a grocery store.
  - B. Going to a grocery store.
  - C. Following directions.
  - D. Giving directions to the man.
  - E. Walking down Maple street.
2.
  - A. In the morning.
  - B. In the afternoon.
  - C. In the evening.
  - D. At noon.
  - E. At midnight.
3.
  - A. Expressing hope.
  - B. Expressing pride.
  - C. Expressing satisfaction.
  - D. Showing happiness.
  - E. Asking for an apology.

4.           A. Buying a book.  
              B. Celebrating a birthday.  
              C. Getting a beautiful book.  
              D. Giving a birthday present.  
              E. Thanking the man for his gift.

**PART II**

**Questions: 5 to 7**

**Directions:**

In this part of the test, you will hear some incomplete dialogues spoken in English, followed by four responses, also spoken in English. The dialogues and the responses will be spoken twice. They will not be printed in your test book, so you must listen carefully to understand what the speakers are saying. You have to choose the best response to each question.

Now listen to a sample question.

Man           : May I taste the caramel pudding you just made?

Woman       : Of course you may. How does it taste?

Man           : ....

Narrator     : What is the most appropriate response for the man to reply?

- A. It is very expensive, I think.
- B. It's very delicious. I really enjoy the taste.
- C. I think I will cook it myself.
- D. I don't think I'll come with you.

Narrator     : The best answer to the question "It's very delicious. I really enjoy the taste." is choice B. Therefore, you should choose answer B.

5. Mark your answer on your answer sheet.
6. Mark your answer on your answer sheet.
7. Mark your answer on your answer sheet.

**PART III**

**Questions: 8 to 11.**

**Directions:**

In this part of the test, you will hear some dialogues or monologues spoken in English. The dialogues or monologues will be spoken twice. They will not be printed in your test book, so you must listen carefully to understand what the speakers are saying. After you listen to the dialogue or monologue, look at the five pictures provided in your test book, and decide which would be the most suitable one with the dialogue or monologue you have heard.

8.

A.



B.



C.



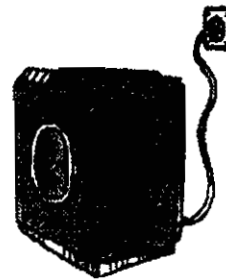
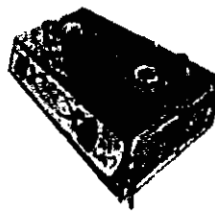
D.



E.



9.



A

B

C

D

E

10.

A.



B.



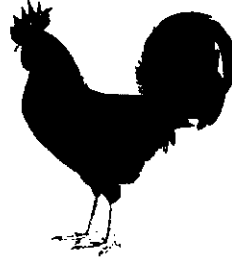
C.



D.

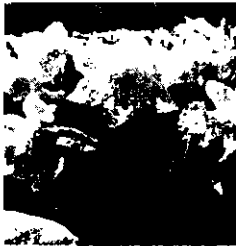


E.



11.

A.



B.



C.



D.



E.



**PART IV**

**Questions 12 to 15.**

**Directions:**

In this part of the test, you will hear several monologues. Each monologue will be spoken twice. They will not be printed in your test book, so you must listen carefully to understand what the speakers are saying.

After you hear the monologue and the question about it, read the five possible answers and decide which one would be the best answer to the question you have heard.

12.       A. Rail services.  
          B. Christmas holiday.  
          C. Airports.  
          D. Snowfall.  
          E. Snowstorm.
13.       A. Two.  
          B. Three.  
          C. Four.  
          D. Five.  
          E. Six.
14.       A. Snakes.  
          B. Anacondas.  
          C. Kinds of snakes.  
          D. What an anaconda looks like.  
          E. Another name for an anaconda.
15.       A. 10 – 20.  
          B. 10 – 30.  
          C. 20 – 30.  
          D. 20 – 40.  
          E. 30 – 40.

**This is the end of the listening section.**

**This text is for question 16.**

Dear Mr. Anwar,

We regret to inform you that we are unable to lend you the sum of \$ 500 that you have requested, but it is possible to grant you part of the sum.

If you are still interested, please contact our main office to arrange an appointment with the assistant manager. He will be happy to discuss the matter further.

Your sincerely

(Lending Officer)

16. Instead of a loan of \$500, what alternative is offered by the officer?
- An appointment to discuss the offer.
  - A cash of \$500.
  - An appointment with the lending officer.
  - A loan of less than \$500.
  - An appointment with the assistant manager.

**This text is for questions 17 and 18.**

(JP, Jakarta)

The Indonesia government and World Wild Fund (WWF) have announced a bold commitment to protect the remaining forest and critical ecosystems of Sumatra.

WWF said the historic agreement represented the first-ever island-wide commitment to protect Sumatra's stunning biodiversity.

The commitment was announced Thursday at the International Union for Conservation of Nature (IUCN), World Conservation Congress in Barcelona and was endorsed by the governors of Sumatra's 10 provinces – the world's sixth-largest island – and also by four ministers.

Sumatra is the only place in the world where tigers, elephants, orangutans and rhinos co-exist.

The agreement commits all the governors in Sumatra, along with the Indonesia ministries of forestry, environment, home affairs and public works, to restore critical ecosystems in Sumatra and protect areas with high conservation values.

WWF, Conservation International, Fauna and Flora International, Wildlife Conservation Society and other conservation groups working in Sumatra have agreed to help implement the political commitment to protect what remains of the island's species-rich forests and critical areas. The island has lost 48 percent of its natural forest cover since 1985.

More than 13 percent of Sumatra's remaining forests are peat forests, which sit a top the deepest peat soil in the world; clearing peat forests is a major source of carbon emissions that cause climate change.

17. The following parties are involved in the commitment to protect Sumatra's biodiversity, EXCEPT ....
- The Indonesian Conservation Group
  - The minister of forestry
  - The minister of public works
  - The 10 governors of Sumatra
  - The World Wildlife Fund



18. The agreement is ....
- to implement the decisions of the World Conservation Congress
  - to support the governors of Sumatra to chase animals hunters
  - to stop the emissions of carbon that cause climate change
  - to protect the forests and ecosystems in Sumatra
  - to work together for the development of Sumatra

This text is for questions 19 and 20.

### Announcement to All staff

It's that time of year again. As you all know, Christmas is our busiest season of the year. Every year it is a struggle for management and supervisors to find the time and energy to organize a staff Christmas party. This year, we have decided to postpone the Christmas party until after our busy season.

#### Party Details:

- Date : Second or third Saturday in January
- Theme : Beach
- Food : Caribbean
- Special events : Karaoke and happy dancing

We apologize that the celebration will have to wait until the new year. Anyone interested to help out with the event is encouraged to call Lucy. Lucy's cell phone number is 222-3098. Please contact Lucy outside business hours regarding this matter.

Thank you,  
Management

19. When will the party be held?
- In the busiest time of the year.
  - In January.
  - In December.
  - Before Christmas.
  - In Christmas time.
20. "...we have to postpone the Christmas Party ..."
- The underlined word is closest in meaning to ....
- to share
  - to spare
  - to move
  - to delay
  - to create

**This text is for questions 21 and 22.**

Once, a cap seller was passing through a jungle. He was dead tired and needed to rest. Then, he stopped and spread a cloth under a tree. He placed his bag full of caps near him and lay down with his cap on his head.

The cap seller had a sound sleep for one hour. When he got up, the first thing he did was to look into his bag. He was startled when he found all his caps were not there. He was wondering where they could have gone. Indeed, he was greatly puzzled.

When he looked up the sky, he was very surprised to see monkeys sitting on the branches of a tree, each wearing a cap on his head. They had evidently done it to imitate him.

He decided to get his caps back by making a humble request to the monkeys. In return, the monkeys only made faces of him. When he began to make gestures, even when he raised his fist towards them to threaten them, they also imitated him.

At last he hit upon a clever idea. "Monkeys are a great imitator," he thought. So he took off his own cap and threw it down on the ground. As he had expected, all the monkeys took off the caps and threw them down on the ground. Quickly he stood up and collected the caps, put them back into his bag and went away.

21. Why was each monkey wearing a cap on their head?
- A. They liked them.
  - B. They liked wearing caps.
  - C. They were imitating the cap seller.
  - D. They were teasing the cap seller.
  - E. They had stolen the caps.
22. What is the moral value of the text?
- A. Monkeys are clever animals.
  - B. Put your belongings in a safe place.
  - C. Kindness must be possessed by everyone.
  - D. Foolishness is a source of faulty
  - E. You have to know who you are talking to.

This following text is for questions 23 to 25.

Wakatobi is the name of an archipelago and regency in Sulawesi Tenggara, Indonesia. The name Wakatobi is derived from the names of the main islands of the archipelago: Wangiwangi, Kaledupa, Tomea, and Binongko. The group is part of a larger group called the Tukangbesi Islands.

The archipelago, located in the biodiverse hotspot known as Wallacea. It is part of the Wakatobi National Park. Wakatobi as one of the world's marine tourism objects is now preparing itself and ready to welcome you and your family with hospitality and its particular culture. The Wakatobi is also home to Operation Wallacea, a UK based, non-profit conservation group looking at sustainable development of fisheries and coral reef research. An independent non-commercial website has been set up about the marine park. This website contains tourist and travel information in Wakatobi, including the biodiversity, conservation and local people.

Wakatobi is also situated geographically at the world's coral reef triangle center with its 942 fish species and 750 coral reef species from a total of 850 world's collection comparing to the two world's famous diving centers of the Caribbean Sea that owes only 50 species and other 300 coral reef species in the Red Sea.

23. What is the text about?
- A. Wakatobi as a tourist spot.
  - B. Wakatobi as a research spot.
  - C. Wakatobi as a fishing center.
  - D. Wakatobi as a conservation center.
  - E. Wakatobi as a regency.
24. Wakatobi is located in a larger group of islands called ...
- A. Wangiwangi.
  - B. Kaledupa.
  - C. Tomea.
  - D. Binongko.
  - E. Tukangbesi.
25. What is the operation of Wallacea?
- A. Non-profit conservation group looking at sustainable development of fisheries and coral reef research.
  - B. The additional sources about the biodiversity, conservation and local people.
  - C. Tourist and travel information about the Wakatobi.
  - D. It is part of the Wakatobi National Park.
  - E. The world's marine tourism objects.

**The following text is for questions number 26 and 27.**

November 25, 2011

Information Computer Technology Group  
1234 Narrow Road  
Rainbow, PA 10987

Dear Staff Members:

Good day.

Information Computer Technology Group (ICTG) has scheduled a series of employee training sessions as suggested by the President. All departments are required to attend.

The company has invested in new software to be installed in each computer unit. The software will help everyone to work efficiently and effectively. The training session will be beneficial and worthwhile for our company to be updated with the current trend of the industry.

Kindly review the attached schedule that is specific to your department. Should you have questions with the schedule, kindly contact the ICTG helpdesk at 123-456-789 local 123 or email [helpdesk@company.com](mailto:helpdesk@company.com).

May we request for all supervisors and managers to confirm the attendance of their department before November 30, 2011.

Thank you for your attention.

Sincerely,

Julius Salt  
ICTG Head

26. Why are all departments required to attend the employee training sessions?
- The company is going to invest in new software.
  - The company has just signed a contract with ICTG.
  - The training can make employees happy to work in the company.
  - A new software has just been installed in each computer unit in the company.
  - Employees need to be updated with new trend in technology.
27. From the text we know that ....
- the participants will be excited about the new technology
  - not many people will attend the training
  - the staff members are not happy about it
  - there will be questions about the schedule
  - The schedule is on a separate page

**This text is for questions 28 to 30.**

An *aurora* is a natural light display in the sky particularly in the high latitude (Arctic and Antarctic) regions, caused by the collision of energetic charged particles with atoms in the high altitude atmosphere (thermosphere). The charged particles originate in the magnetosphere and solar wind and are directed by the Earth's magnetic field into the atmosphere. Most aurora occur in a band known as the *auroral zone* which is typically 3° to 6° in latitudinal extent and at all local times or longitudes.

Aurora is classified as diffuse or discrete aurora. The diffuse aurora is a featureless glow in the sky which may not be visible to the naked eye even in a dark night and defines the extent of the auroral zone. Discrete aurorae are sharply defined features within the diffuse aurora which vary in brightness from just barely visible to the naked eye to bright enough to read a newspaper at night. Discrete aurorae are usually observed only in the night sky because they are not as bright as the sunlit sky.

In northern latitudes, the effect is known as the *aurora borealis* (or the northern lights), named after the Roman goddess of dawn, Aurora, and the Greek name for the north wind, Boreas, by Pierre Gassendi in 1621. Its southern counterpart, the *aurora australis* (or the southern lights), has almost identical features to the *aurora borealis* and changes simultaneously with the changes in the northern auroral zone and is visible from high southern latitudes in Antarctica, South America and Australia.

28. The following are some facts about aurora, EXCEPT ....
- A. it is diffuse or discrete
  - B. it is a display of natural light
  - C. it can be seen in Arctic and Antarctic
  - D. it is always bright enough for you to read a newspaper
  - E. it is caused by the collision of charged particles and atoms in the thermosphere
29. What is the main idea of paragraph 2?
- A. The diffuse aurora is a featureless glow in the sky.
  - B. The discrete aurora are sharply defined features within the diffuse aurora.
  - C. There are two kinds of aurora, diffuse and discrete aurora.
  - D. Discrete aurorae are usually observed only in the night sky.
  - E. Discrete aurorae are not as bright as the sunlit sky.
30. We know from the text that ....
- A. An aurora is very beautiful
  - B. Aurorae can be seen in the North and South Poles
  - C. Aurora is named after a Roman god
  - D. Diffuse aurora is sharply defined
  - E. Discrete aurora is more beautiful than diffuse aurora

The text is for questions 31 and 32.

**THE WORLD AT YOUR FEET  
GALAXY TOURS**

**THE SPECIALIST FOR SOUTH AND NORTH ASIA, AUSTRALIA,  
NEW ZEALAND, AND BALI  
OFFERS UNBEATABLE BARGAIN!!!**

**TRAVEL TO EXCITING NEW ZEALAND**

**HURRY! BOOK NOW! LIMITED SEATS ONLY**

**Travel highlights**

- Visit a native Maori village and observe their unique traditional dances and customs.
- Stay at peaceful sheep farms and dairy farms.
- Ski on Mount Cook, the highest peak in New Zealand.
- Asian meals provided.
- Five-star accommodation.

All flights on Air New Zealand

Departing 10 Dec, 16 Dec, and 22 Dec

Prices: \$2500	\$1800
\$2200	\$1600
(Adults)	(Children below 12)

**BOOK NOW TO AVOID HOLIDAY CROWDS**

31. According the text, what is excluded from the travel?
- Flower gardens.
  - Sheep farms.
  - Maori dances.
  - Skiing.
  - Dairy farms.
32. What is being promoted in the package?
- Tours to New Zealand.
  - Tours to North Asia.
  - Tours to South Asia.
  - Tours to Australia.
  - Tours to Bali.

**This text is for questions 33 to 35.**

Is it important to know what your kids are watching? Of course yes. Television can expose things you have tried to protect them from, especially violence, pornography, consumerism, etc.

A study demonstrated that spending too much time on watching TV during the day or at bedtime often causes bedtime disruption, stress, and short sleep duration.

Another research found that there is a significant relationship between the amount of time spent for watching television during adolescence and early adulthood, and the possibility of being aggressive.

Meanwhile, many studies have identified a relationship between kids who watch TV a lot and being inactive and overweight.

Considering some facts mentioned above, protect your children with the following tips:

1. Limit television viewing to 1-2 hours each day.
2. Do not allow your children to have a TV set in their bedrooms.
3. Review the rating TV shows that your children watch.
4. Watch television with you children and discuss what is happening in the show.

33. Too much TV watching can possibly lead to ....
- A. frustration
  - B. overweight
  - C. low achievement
  - D. laziness
  - E. hyperactivity
34. We know from the text that ....
- A. too much watching TV causes stress
  - B. being aggressive can happen to children
  - C. adult can get overweight
  - D. parents will protect their children
  - E. short of sleep duration cause overweight
35. The word disruption in the second paragraph is closest in meaning to ....
- A. improvement
  - B. restoration
  - C. eruption
  - D. allocation
  - E. interference

**This text is for questions 36 to 38.**

Study groups are commonly utilized by many students to prepare themselves for class discussions, examinations or class presentations. They can also make use of it to review their weak points and learn new ideas. I myself find that we can learn more effectively in a study group. However, I can't deny that study groups have also some disadvantages.

On the positive side a study group gives the students motivation to study and update their readings because the other members likely give them encouragement. It also helps them to learn new ideas as well as important points they missed on their readings. Most of the members in my study group are very open in sharing what they know. These alert me that I should update my readings so I could also share something.

On the other hand, the disadvantage of a study group is the part of compelling the students to attend it after class or during their free time. Commitment among each member is also an important aspect in a study group. Hence the members of a study group have to set aside other activities to study together.

To join a study group or not is the student's own choice, because there are other students who learn better when they do it on their own. If a student thinks he/she will be learning effectively in group, he/she had better go on and enjoy the fun way of learning.

36. Some students are motivated to study in a study group because the other members likely ....
- give them better ideas
  - come up with important ideas
  - are clever than them
  - solve the problem
  - encourage them to study
37. The writer finds it necessary to join a study group because ....
- he knows study groups have also some disadvantages
  - he should update his readings
  - he can learn things more effectively
  - the members in his group are open-minded
  - his friends have more knowledge compared to him
38. From the text, we know that ....
- a study group has nothing to do with reading ability
  - the members have to sacrifice their time for their study group
  - the writer doesn't think a study group useful for him
  - an agreement made to study regularly in a study group isn't necessary
  - a study group is always useful for everybody



The following text is for questions 39 to 41.

### Toba Eruption

Approximately 74,000 years ago on the island of Sumatra, Indonesia, a volcanic eruption so violent occurred that it proved to be apocalyptic for the human race. Scientists estimate that the eruption may have ejected up to 6,000 km<sup>3</sup> of magma and pulverized rock and sufficient sulfur gases to form 5,000 megatons of stratospheric sulfuric acid aerosols. The suspension of so much material in the earth's atmosphere resulted in a volcanic winter that lasted all year long, every year for several years. The severe drop in global temperatures had catastrophic effects on vegetation and the food chain dependent upon it for survival - including humans.

Scientists have examined the genetic codes of seemingly disparate and distant races of people and found there's actually very little genetic variability in the entire human race. The evidence indicates that something happened to the human gene pool approximately 74,000 years ago where only very few humans remained alive on the planet (say 5,000 to 10,000), and the current population has grown from these selectively few genotypes. Our existence in such great numbers today (over 6 billion strong) is a testament to our tenacious ability to survive.

39. What caused the disaster to the human race after the Toba eruption?
- The severe drop in global temperature.
  - The stratospheric sulfuric acid.
  - The sulfur gases.
  - The magma and the pulverized rock.
  - The eruption of the mountains Sumatra.
40. What was the most destructive impact of the Toba eruption around 74.000 year ago?
- The extinction of human race in Sumatra.
  - The extinction of vegetation and food chains.
  - Volcanic winter every year for several years.
  - The rain of stratospheric sulfuric acid.
  - The 6,000 km<sup>3</sup> of magma covering the island of Sumatra.
41. We know from the text that ...
- The eruption was the reason for the very limited genetic variability in the entire human race.
  - A new human race appeared after the extinction of humans 74.000 years ago.
  - Human beings were stronger than vegetation against the effect of the eruption.
  - The volcanic materials ejected by the eruption consisted of magma and pulverized rock.
  - The severe drops of sulfuric acid aerosols caused the volcanic winter.

The following text is for questions number 42, 43, and 44.

AGUSTINUS ADISUCIPTO  
(1916-1947)

Born in Pungkursari, Salatiga, Central Java, Adisucipto was known as the founding father of the Indonesian Air Force. He was the first Indonesian who flew the first Indonesian airplane. He was also the founder of the School of Aviation, which later became the Air Force Academy.

A descendant of an *empu* who was one of Prince Diponegoro's troops, Adisucipto was predicted to have a short life. *Mbah Wiryo*, Adisucipto's grandfather, said that his grandson was like *Palgunadi*, a courageous and honest *wayang* character who dies young. That was why Adisucipto's father insisted that his son go to *School tot Opleidings van Indische Arisen* (STOVIA), a medical school for Indonesians during the Dutch Colonial period, and become a doctor. However, Adisucipto's determination to become a pilot was so strong that he dropped out of his medical school to enter the aviation school.

At the *Militaire Luchtvaart Opleidings*, a school of aviation in Kalijati, West Java, he showed an excellent record. He could finish his study in 2 years and was also one of two Indonesians who got an advanced pilot license. For his excellent performance, Adisucipto was appointed secretary of the *Koninklijk Nederlands-Indische Luchtvaart Maatschapij*, the Dutch aviation company.

After the proclamation of the Republic of Indonesia, Adisucipto formed the Air Force together with Suryadarma, who later became the first Commander of the Indonesian Air Force.

42. Adisucipto is one of Indonesia's prominent heroes because he was ....
- the founding father of the Indonesian Air Force
  - the first Indonesian pilot in the world
  - the head of the School of Aviation
  - the grandson of Prince Diponegoro
  - a very brilliant Air Force official
43. What is the main idea of the third paragraph?
- Adisucipto went to the *Militaire Luchtvaart Opleidings*.
  - Adisucipto finished his studies in 2 years.
  - Adisucipto got an advanced pilot license.
  - Adisucipto demonstrated high level achievements in aviation.
  - Koninklijk Nederlands Indische Luchtvaart Maatschapij* was the Dutch aviation company.
44. The reason for Adisucipto's father insisted him entering STOVIA because ....
- he founded the Indonesian Air Force
  - he flew the first Indonesian airplane
  - his father was disappointed
  - he was predicted to die young
  - his father wanted him to be a doctor

**This text is for questions 45 and 46.**

**'Laskar Pelangi': The Audacity of Hope**

This is a movie adapted from a best-selling Indonesian novel. It took 40 days of filming on Belitung Island, Bangka-Belitung province. Involving 12 local actors, it reportedly cost Rp 8 billion. With all the efforts of transforming *Laskar Pelangi* (Rainbow Warrior) into a moving picture, will it satisfy readers' imaginations?

*Laskar Pelangi*, the novel, was written by Andrea Hirata in 2005, based on his own experiences. It is about an inspiring teacher and her 10 students in the poverty-stricken Kampung Gantong in Belitung. The poor condition of their school building does not dampen their high spirits and hopes for a better future.

Two years later, the novel became a phenomenon in Indonesian literature. With its humanistic touch, *Laskar Pelangi* has sold more than 500,000 copies and has won the position of Must-Read Novel in every corner of the nation's bookshops and media review pages. It has finally overcome the domination of teen-lit, chick-lit and even religious novels, the popular theme of today.

Andrea entrusted the filming of the story to the respected figures in the film industry, Mira Lesmana and Riza, as producer and film director. In July 2007, Mira and Riri started the pre-production, which took a year to finish. Together with the scriptwriter Salman Aristo they decided to create a different scenario for the film.

45. What is the main idea of the second paragraph?
- 'Laskar Pelangi' is the story of poor people at the Bangka Belitung province.
  - 'Laskar Pelangi' is the story of poor school children of the Belitung Island.
  - 'Laskar Pelangi' is about poverty in Kampung Gantong in Bangka Belitung.
  - 'Laskar Pelangi' is about an inspiring story towards a better life.
  - 'Laskar Pelangi' is about Andrea Hirata.
46. From the text above, we know that ....
- the movie was played by poor children
  - Andrea Hirata is the producer of *Laskar Pelangi*
  - the novel of *Laskar Pelangi* was a phenomenal work of literature
  - people like the movie better than the novel
  - people like the novel better than the movie

**Questions no. 47 to 49 based on the following cloze test.**

I can't believe that my time in Valencia was a perfect ending to my perfect (47) .... abroad. After listening one last time to my Spanish friends play the guitar, having lunch with Anna (a wonderful Spanish girl who I (48) .... Spanish with), saying good-bye to my (49) .... roommates and other friends I met here, it's inevitable that I will miss Espana and all the experiences I have had there.

47. ....
- adventure
  - chance
  - risk
  - treatment
  - threat

48. ....

- A. performed
- B. expressed
- C. practiced
- D. explained
- E. said

49. ....

- A. wonder
- B. wondering
- C. wonderful
- D. wonderfully
- E. wonderfulness

50.

1. She could not walk, so my father brought her home.
2. He also promised that he would buy a cushion for him.
3. I am really happy because I have a pet now.
4. The cat was badly injured and her legs hurt.
5. My father was on his way home from the office when he saw a cat.
6. After I put a bandage, my father said that I could have her as my pet.
7. I call my pet Ginger and I will take care of her.
8. At home, we cleaned the cat and put a bandage on her injured leg.

The best arrangement of the sentences above is ....

- A. 5-8-6-7-2-1-4-3
- B. 5-2-1-4-7-6-8-3
- C. 5-1-8-2-4-7-6-3
- D. 5-4-1-8-6-2-7-3
- E. 5-4-7-6-2-1-8-3